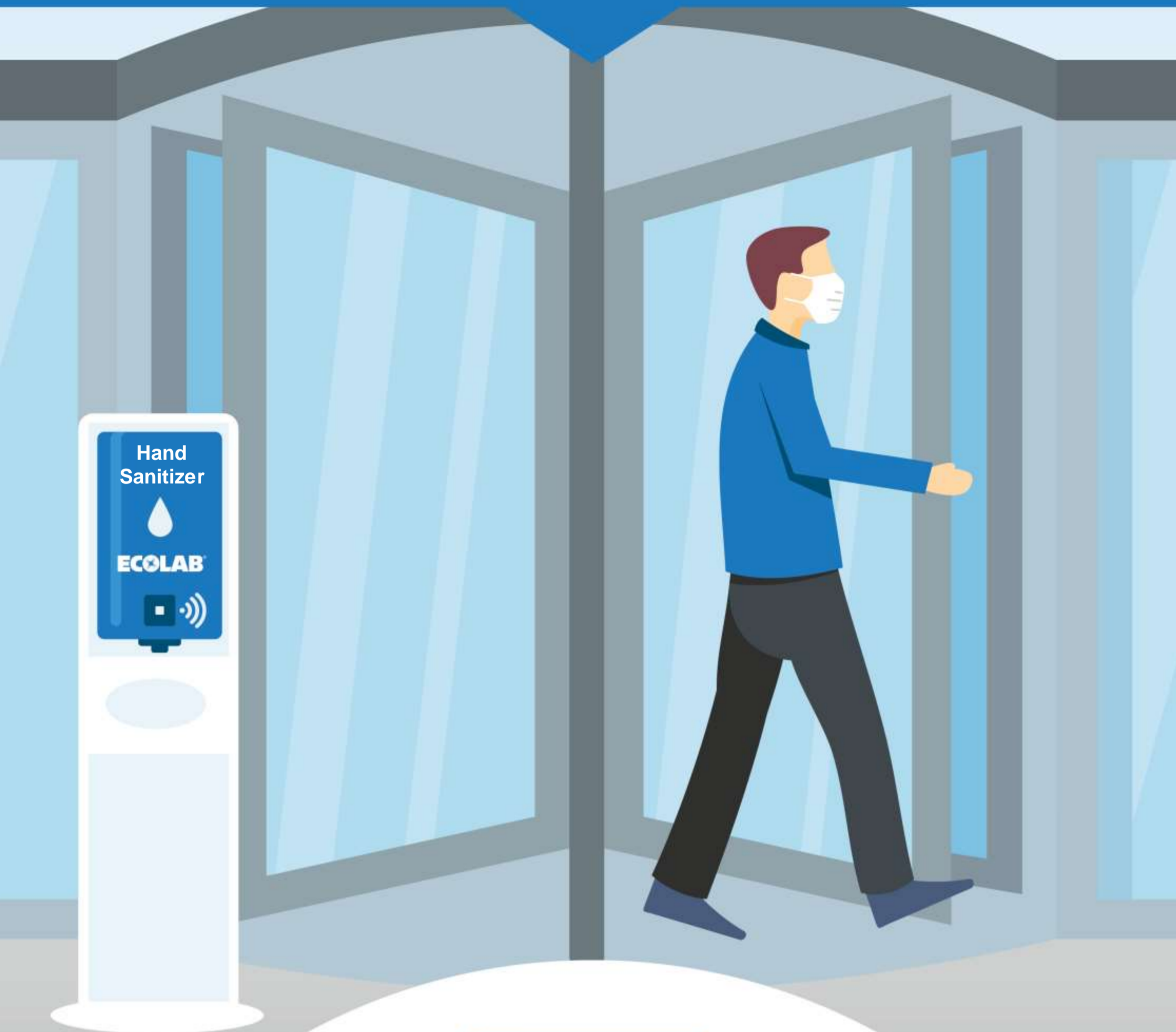


Practice Hand Hygiene

AT TRANSITIONS



Don't bring germs with you from one activity or location to the next.

AFTER HIGH-EXPOSURE MOMENTS



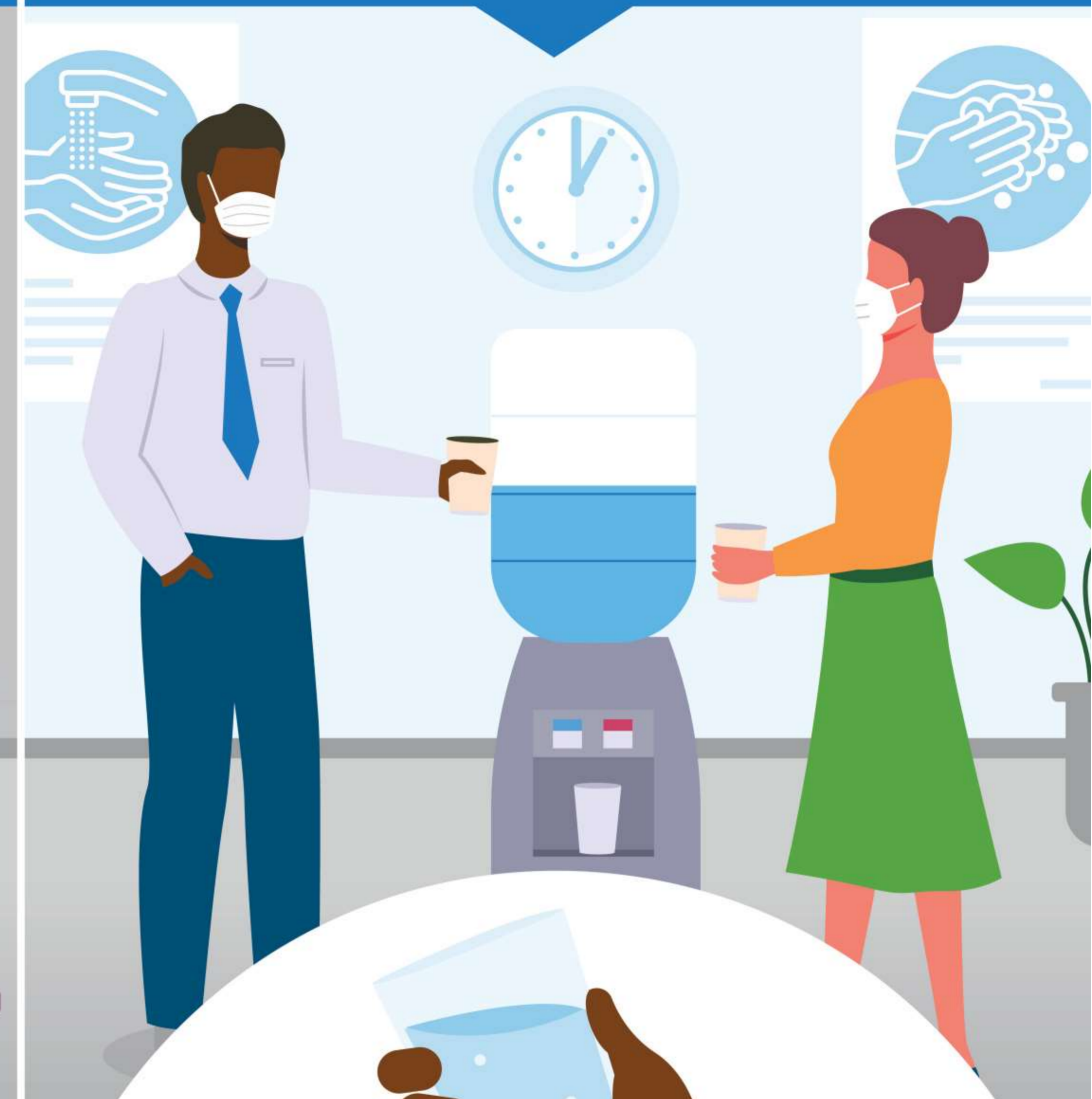
Going to the bathroom, handling money, and preparing and serving food **are activities with more exposure to germs.**

BEFORE AND AFTER TOUCHING SHARED OBJECTS



We touch on average 300 surfaces every 30 minutes. When you share objects or instruments in the workplace, you are also sharing germs.

DURING SOCIAL MOMENTS



Socializing can make us forget process and protocol. Take safety into your own hands and practice hand hygiene in a social setting.